

INSTALLATION MANUAL



Agra-GPS GleanerS9-JD Bridge for Gleaner S9 Series Combines

Version 1.0
Revision A
July 2020



Contact information
Agra-GPS Ltd.
Box 2585
Stony Plain, AB
T7Z 1X9
CANADA
001 780 990 4052 Phone
www.agra-gps.com

Release Notice

This is the July 2020 release (Revision A) of the GleanerS9-JD Bridge Installation Manual.

Disclaimer

While every effort has been made to ensure the accuracy of this document, Agra-GPS Ltd assumes no responsibility for omissions and errors. Nor is any liability assumed for damages resulting from the use of information contained herein. Agra-GPS Ltd shall not be responsible or liable for incidental or consequential damages or a loss of anticipated benefits or profits, work stoppage or loss, or impairment of data arising out of the use, or inability to use, this system or any of its components.

DO NOT USE THE GleanerS9-JD Bridge IF YOU DISAGREE WITH THE DISCLAIMER.

Important Safety Information

Read this manual and the operation and safety instructions carefully before installing the GleanerS9-JD Bridge.

- Follow all safety information presented within this manual.
- If you require assistance with any portion of the installation or service of your equipment, contact your Agra-GPS for support.
- Follow all safety labels affixed to the system components. Be sure to keep safety labels in good condition and replace any missing or damaged labels. To obtain replacements for missing or damaged safety labels, contact Agra-GPS.

When operating the machine after installing the GleanerS9-JD Bridge, observe the following safety measures:

- Be alert and aware of surroundings.
- Do not operate the GleanerS9-JD Bridge system while under the influence of alcohol or an illegal substance.
- Remain in the operator's position at all times when the GleanerS9-JD Bridge system is engaged.
- Determine and remain a safe working distance from other individuals. The operator is responsible for disabling the GleanerS9-JD Bridge system when the safe working distance has been diminished.
- Ensure the GleanerS9-JD Bridge is disabled prior to starting any maintenance work on the machine or parts of the GleanerS9-JD Bridge system.
- Follow all safety instructions from the GleanerS9 system as well as the JD system.
- The GleanerS9-JD Bridge must only be used in the field, never on the street.

Electrical Safety

- Always verify that the power leads are connected to the correct polarity as marked. Reversing the power leads could cause severe damage to the equipment.
- Verify that all cables and connectors are not going over sharp edges and are not pinned, as this could cause power shortages and/or malfunctions.

Step 1: Mounting the GleanerS9-JD Bridge

The GleanerS9-JD Bridge is installed right of the driver seat.

Open the panel to the right of the seat and expose the compartment below.



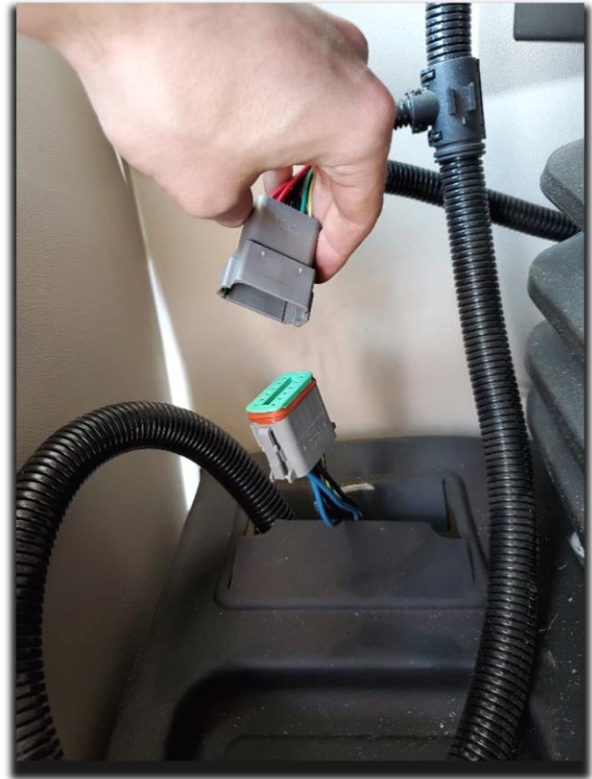
Towards the back of the compartment there should be three diagnostic ports. These ports will have numeric designations.

Take the GleanerS9-JD adapter cable and connect the end labelled 'Main' into the diagnostic port labelled '2'. Connect the other end, labelled 'Secondary' into the diagnostic port labelled '1'.



Then, insert the 12-pin Deutsch 'in-between' connectors of the GleanerS9-JD adapter in between the Deutsch connectors on the cable that is routed through the floor located just to the right of the driver's seat. These connectors may need to be exposed, as occasionally they are tucked into the hole they are routed through.

This cable and the set of connectors can also be accessed through the compartment where the first two diagnostic plugs were connected for a clean install.



Connect the final end of the GleanerS9-JD Adapter, the 12-pin male Deutsch connector, into the 12-pin female Deutsch connector of the GleanerS9-JD bridge.

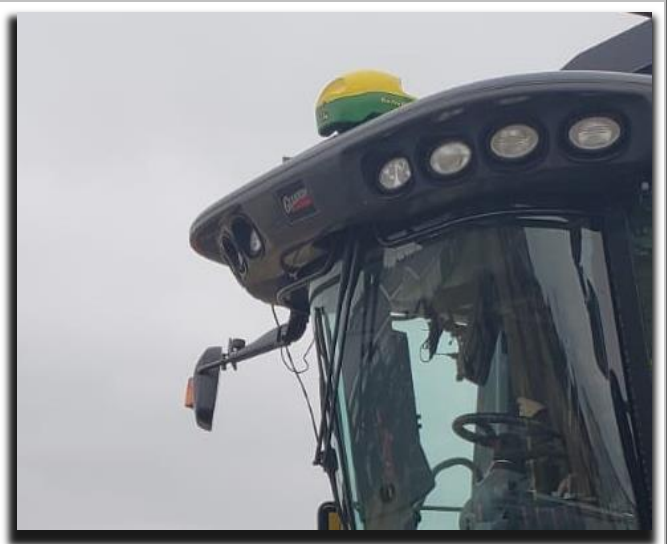
Next, take the last cable in the set, the Agra-GPS John Deere adapter cable, and connect the 6-pin male Deutsch into the 6-pin female Deutsch of the GleanerS9-JD bridge.

Step 2: Mounting the JD Equipment

The John Deere GPS receiver **MUST** be mounted at the front of the cab.

Use the provided adapter cable to connect the 12-pin deutsch of the JD GPS receiver with the 12-pin deutsch of the GleanerS9-JD cable.

It is best to route the JD receiver end of the GleanerS9-JD cable out through the right side of the cab and up to the roof.



Mount the JD Monitor somewhere sturdy inside the cab and connect it to the GleanerS9-JD cable.

The JD-display may be mounted many different ways.

You may use the standard JD mounts or a RAM mount.

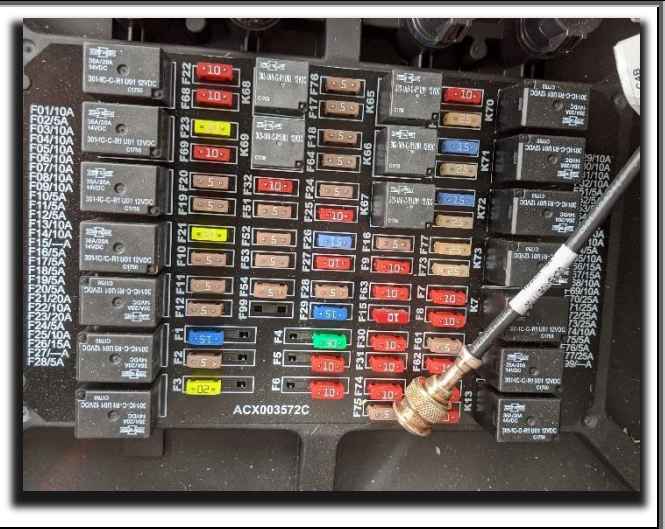
RAM-270U + 2 * 1.5" balls (RAM-202U) + 4" double socket arm (RAM-201U)

<http://www.rammount.com/part/RAM-270U>



Step 3: Remove the existing Steering Controller

In order for the GleanerS9-JD bridge to function, the existing guidance controller must be removed from operation. To do this, simply remove fuse F28 (VD03) in the same compartment where the GleanerS9-JD bridge was installed. On startup there may be some errors related to the VD03 controller or the F28 fuse. These can be ignored.



Step 4: Usage of the GleanerS9-JD Bridge

Further instructions for set up and usage of the GleanerS9-JD bridge can be found within its respective user manual.